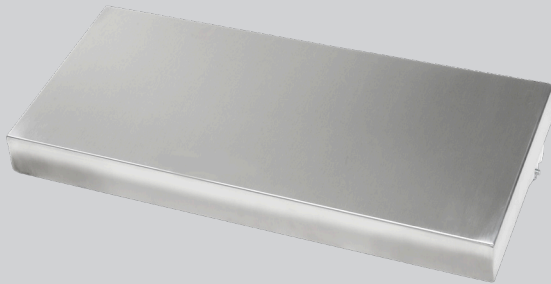




*SPEC SHEET*

## Tray Shelf



## Specifications

It is constructed of 18 gauge stainless steel and meets standards of sanitation set forth by NSF.

G.A. Systems Tray Shelf is an accessory that can be added to the end of any G.A. Systems cabinet. It has the ability to lift off and fold down.

## Dimensions

ITEM	MODEL	WIDTH	LENGTH	HEIGHT
C0102	TS12	29"	12"	2"
C0181	TS1236	35"	12"	2"
C0182	TS15	29"	15"	2"
C0183	TS1536	35"	15"	2"
C0937	TS18	29"	18"	2"
C1145	TS1836	35"	18"	2"

PROJECT: \_\_\_\_\_

ITEM #: \_\_\_\_\_

MODEL: \_\_\_\_\_

## Standard Features

- ☐ Zinc plated steel drop shelf brackets (2)
- ☐ Fold down when not in use
- ☐ Two piece lift-off assemble



TS18 as shown on H5 Speedline Heated Cabinet.